

Índice

Estudo Luminotécnico

Estudo Luminotécnico

Philips Lighting - BBG152 1xLED50/NW (1xLED50/NW/-)..... 2

Exterior

Esquema de posição de luminárias.....5

Lista de luminárias.....6

Visões.....7

Resumo de resultados de superfícies.....9

Superfície de cálculo Tecto / Potência luminosa vertical.....10

Superfície de cálculo Piso / Potência luminosa vertical.....13

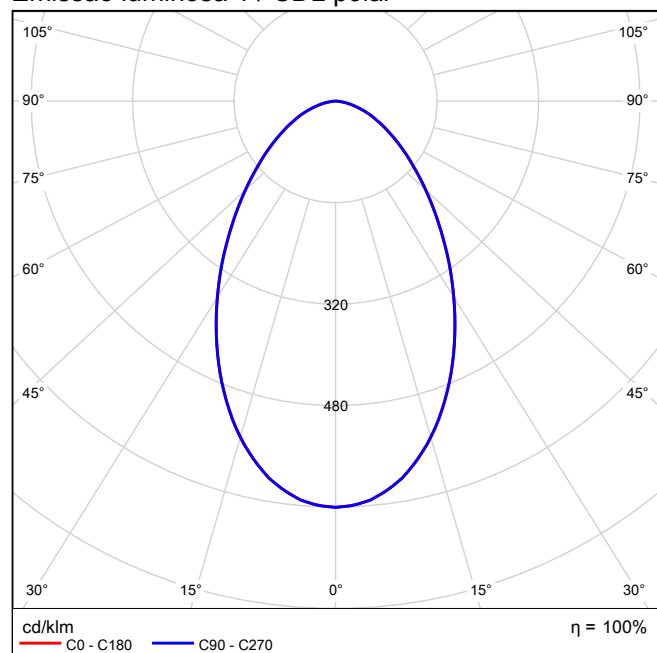
Philips Lighting BBG152 1xLED50/NW 1xLED50/NW/-

LED Marker BBG150/151/152 – Reliable landscape lighting for harmonious city living People want to create a pleasant atmosphere around their property – something that will catch visitors' attention, make them feel good and want to come back again. They would like to be able to create an appealing ambience at minimum cost, though without compromising on the quality of the lighting. Combining a simple design with reliable lighting performance, this low-cost white-light LED marker delivers a glare-free soft light effect.

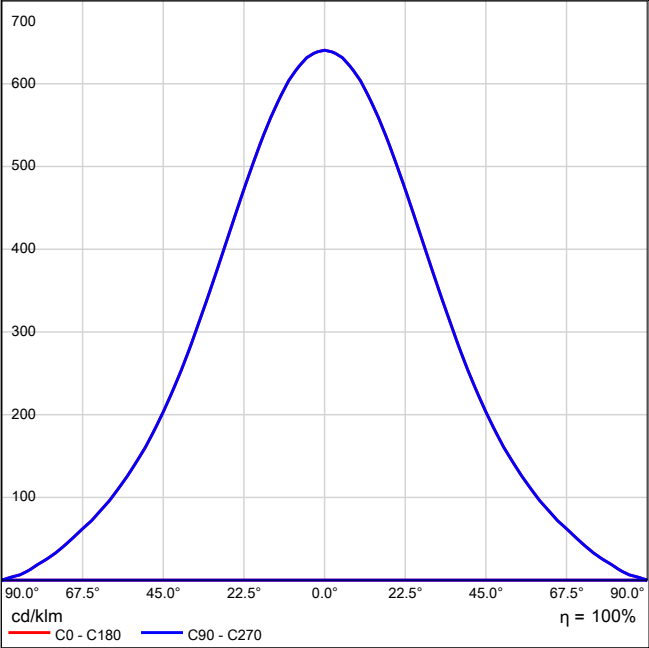


Grau de actuação operacional: 100%
Fluxo luminoso da luminária: 470 lm
Potência: 13.0 W
Rendimento luminoso: 36.1 lm/W

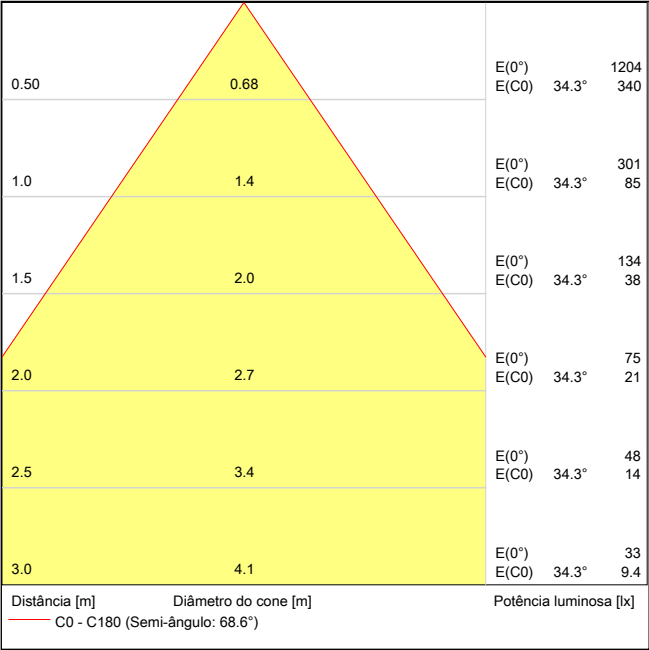
Emissão luminosa 1 / CDL polar



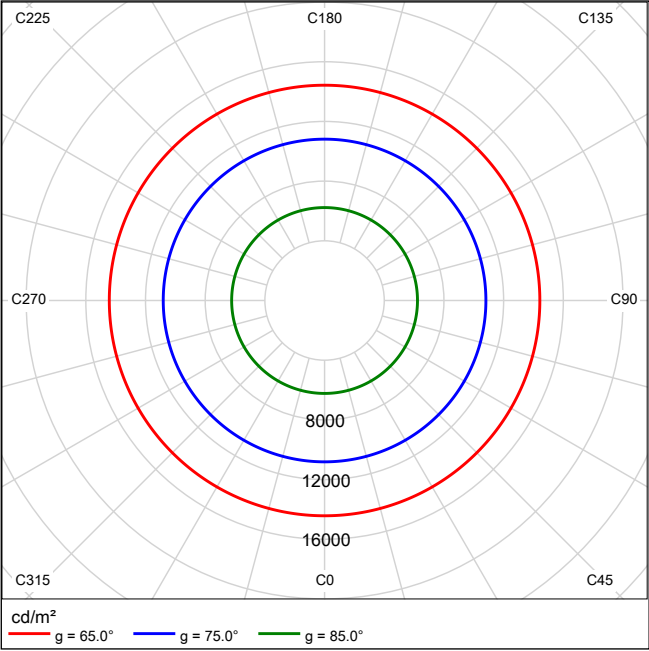
Emissão luminosa 1 / CDL linear



Emissão luminosa 1 / Diagrama de cone



Emissão luminosa 1 / Diagrama de densidade de luminância

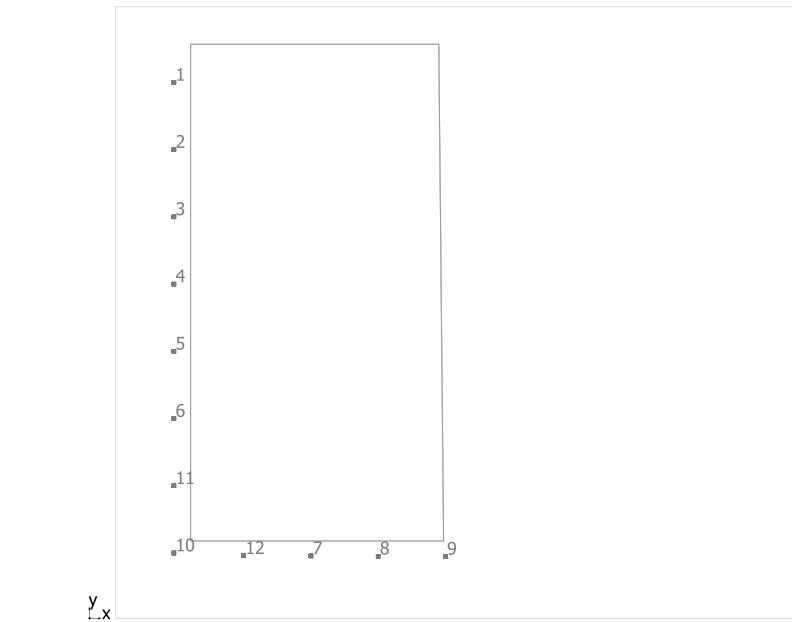


Emissão luminosa 1 / Diagrama UGR

Avaliação de ofuscamento seg. UGR												
ρ Tecto		70	70	50	50	30	70	70	50	50	30	
ρ Paredes		50	30	50	30	30	50	30	50	30	30	
ρ Solo		20	20	20	20	20	20	20	20	20	20	
Tamanho da sala		Direcção transversal do olhar					Direcção longitudinal do olhar					
X	Y	em relação ao eixo da lâmpada					em relação ao eixo da lâmpada					
2H	2H	21.9	23.0	22.2	23.2	23.5	21.9	23.0	22.2	23.2	23.5	
	3H	22.9	23.9	23.2	24.1	24.4	22.9	23.9	23.2	24.1	24.4	
	4H	23.2	24.2	23.6	24.4	24.7	23.2	24.2	23.6	24.4	24.7	
	6H	23.5	24.3	23.8	24.6	24.9	23.5	24.3	23.8	24.6	24.9	
	8H	23.5	24.4	23.9	24.7	25.0	23.5	24.4	23.9	24.7	25.0	
	12H	23.5	24.3	23.9	24.6	25.0	23.5	24.3	23.9	24.6	25.0	
4H	2H	22.4	23.3	22.7	23.6	23.8	22.4	23.3	22.7	23.6	23.8	
	3H	23.5	24.3	23.9	24.6	24.9	23.5	24.3	23.9	24.6	24.9	
	4H	24.0	24.7	24.4	25.0	25.4	24.0	24.7	24.4	25.0	25.4	
	6H	24.3	24.9	24.7	25.3	25.7	24.3	24.9	24.7	25.3	25.7	
	8H	24.4	24.9	24.8	25.3	25.7	24.4	24.9	24.8	25.3	25.7	
	12H	24.4	24.9	24.9	25.3	25.8	24.4	24.9	24.9	25.3	25.8	
8H	4H	24.1	24.7	24.6	25.1	25.5	24.1	24.7	24.6	25.1	25.5	
	6H	24.6	25.0	25.0	25.4	25.9	24.6	25.0	25.0	25.4	25.9	
	8H	24.7	25.1	25.2	25.5	26.0	24.7	25.1	25.2	25.5	26.0	
	12H	24.8	25.1	25.3	25.6	26.1	24.8	25.1	25.3	25.6	26.1	
12H	4H	24.1	24.6	24.6	25.0	25.5	24.1	24.6	24.6	25.0	25.5	
	6H	24.6	25.0	25.1	25.4	25.9	24.6	25.0	25.1	25.4	25.9	
	8H	24.8	25.1	25.2	25.5	26.0	24.8	25.1	25.2	25.5	26.0	
Variação da posição do observador para as distâncias de luminária S												
S = 1.0H		+0.2 / -0.3					+0.2 / -0.3					
S = 1.5H		+0.4 / -0.8					+0.4 / -0.8					
S = 2.0H		+0.9 / -1.3					+0.9 / -1.3					
Tabel padrão		BK04					BK04					
adicional de correcção		7.1					7.1					
Índices de ofuscamento corrigidos com referência a 470lm Corrente luminosa total												

Os valores UGR são calculados conforme CIE Publ. 117. Proporção espaço/altura = 0.25

Exterior



Philips Lighting BBG152 1xLED50/NW

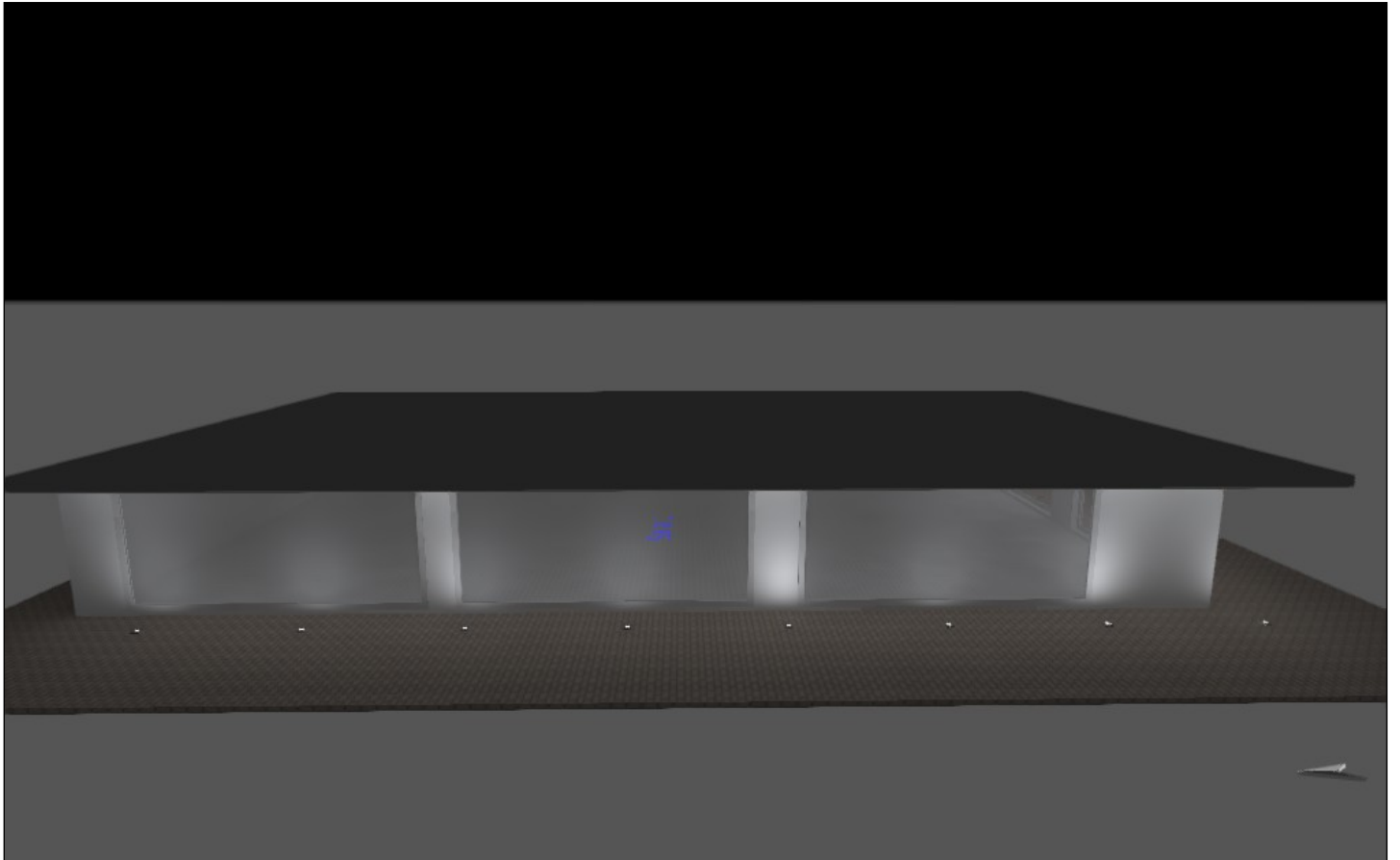
N°	X [m]	Y [m]	Altura de montagem [m]	Factor de manutenção
1	3.766	23.913	-0.100	0.80
2	3.766	20.913	-0.100	0.80
3	3.766	17.913	-0.100	0.80
4	3.766	14.913	-0.100	0.80
5	3.766	11.913	-0.100	0.80
6	3.766	8.913	-0.100	0.80
7	9.881	2.782	-0.100	0.80
8	12.881	2.771	-0.100	0.80
9	15.881	2.760	-0.100	0.80
10	3.766	2.913	-0.100	0.80
11	3.766	5.913	-0.100	0.80
12	6.881	2.792	-0.100	0.80

Exterior

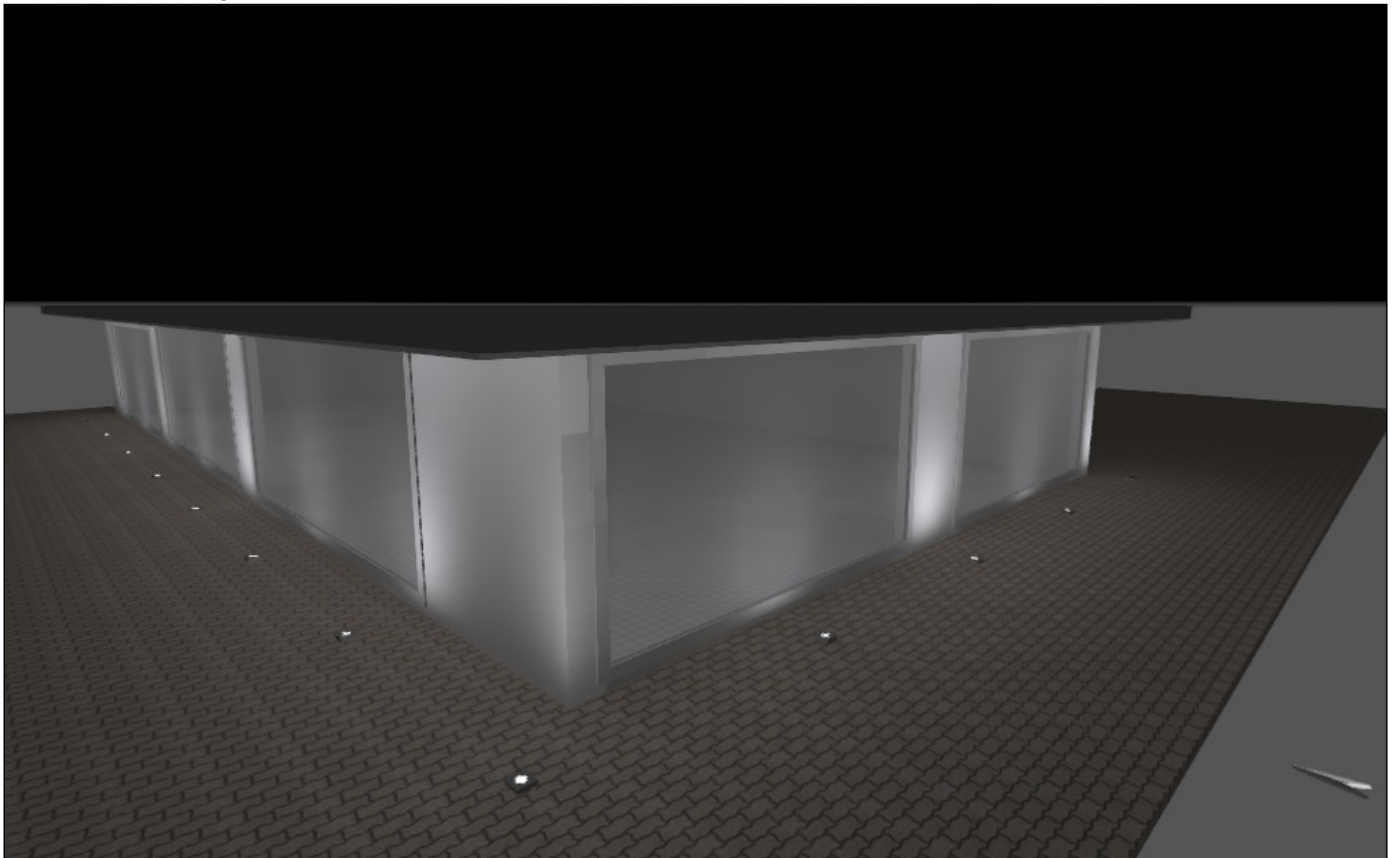
#	Luminária	Φ (Luminária) [lm]	Potência [W]	Rendimento luminoso [lm/W]
12	Philips Lighting - BBG152 1xLED50/NW	470	13.0	36.1
	Somatório de todas as luminárias	5640	156.0	36.2

Exterior

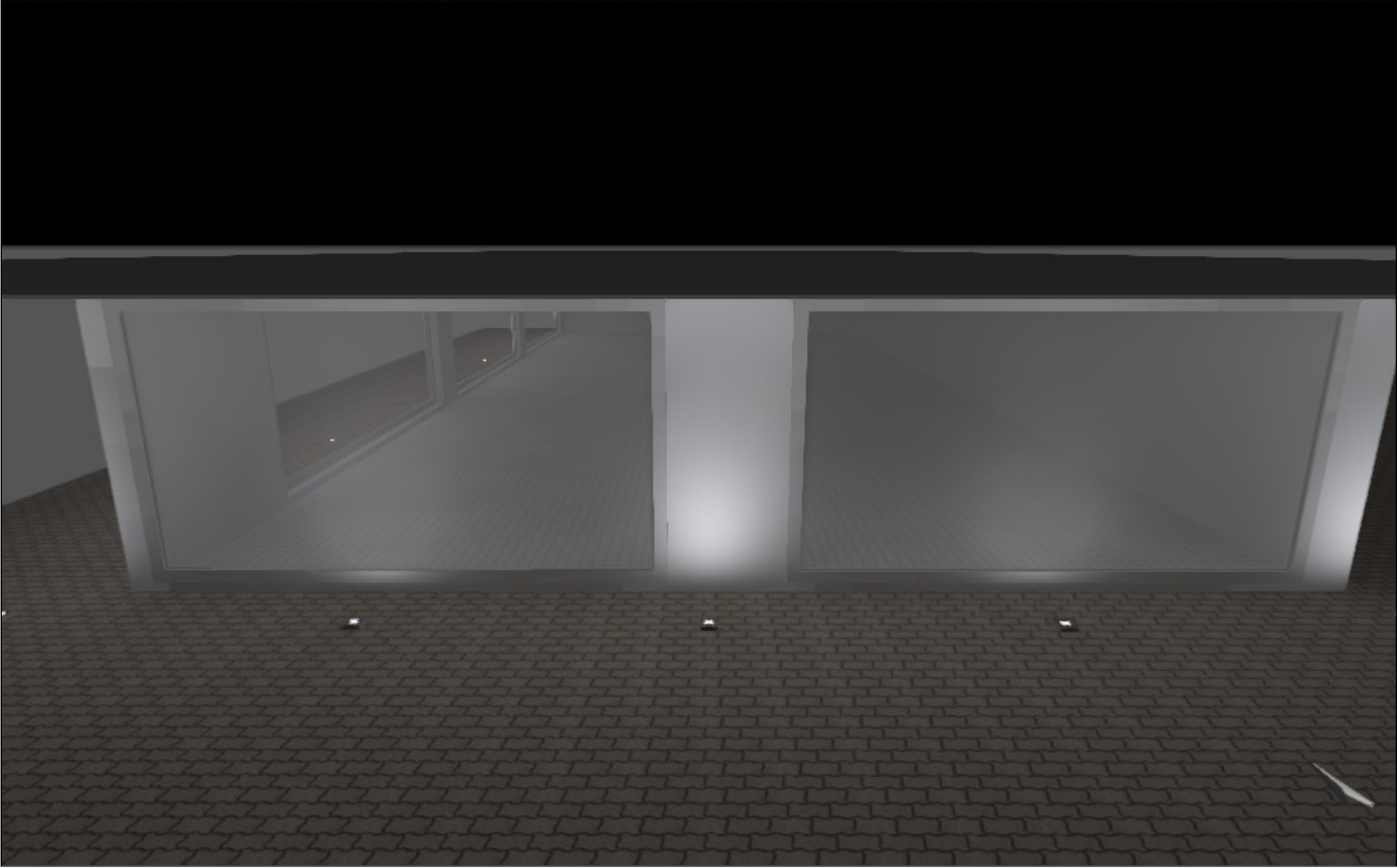
Exterior - Vista Lateral



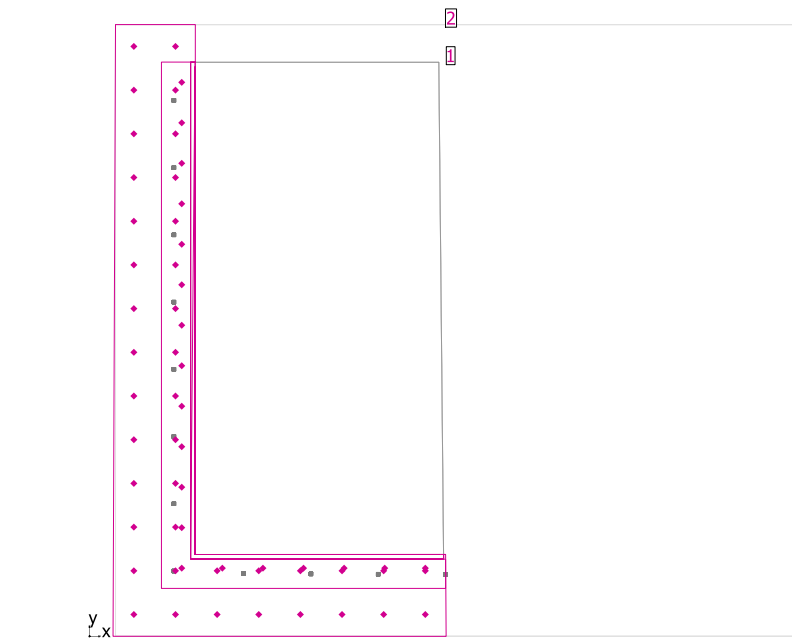
Exterior - Vista Diagonal



Exterior - Vista Frontal



Exterior

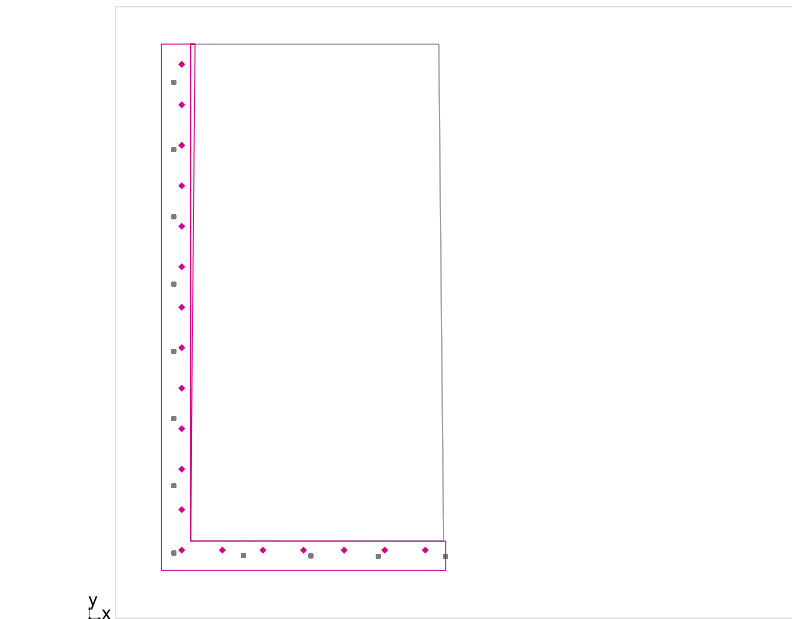


Factor de manutenção: 0.80

Geral

Superfície	Resultado	Médio (Nominal)	Min	Máx	Mín/Médio	Mín/ Máx
1 Superfície de cálculo Tecto	Potência luminosa vertical [lx] Altura: 2.770 m	40.4	29.0	58.2	0.72	0.50
2 Superfície de cálculo Piso	Potência luminosa vertical [lx] Altura: 0.000 m	8.05	0.00	14.4	0.00	0.00

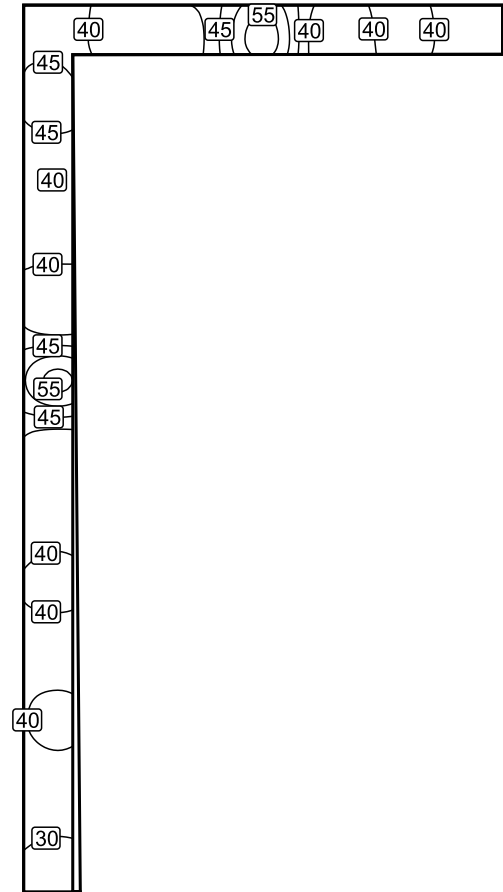
Superfície de cálculo Tecto / Potência luminosa vertical



Factor de manutenção: 0.80

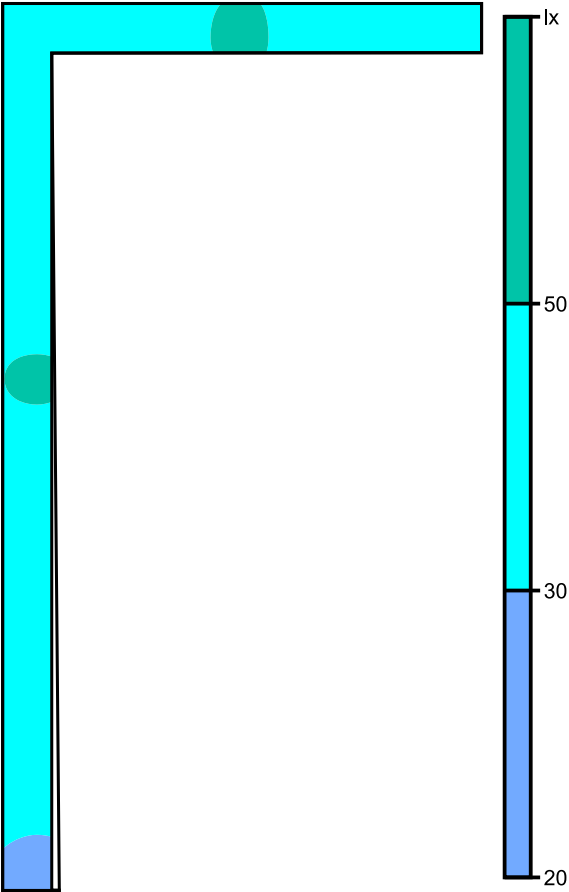
Superfície de cálculo Tecto: Potência luminosa vertical (Trama)
Cenário de Luz: Cenário de Luz 1
Médio: 40.4 lx, Min: 29.0 lx, Máx: 58.2 lx, Mín/Médio: 0.72, Mín/ Máx: 0.50
Altura: 2.770 m

Linhas isográficas [lx]



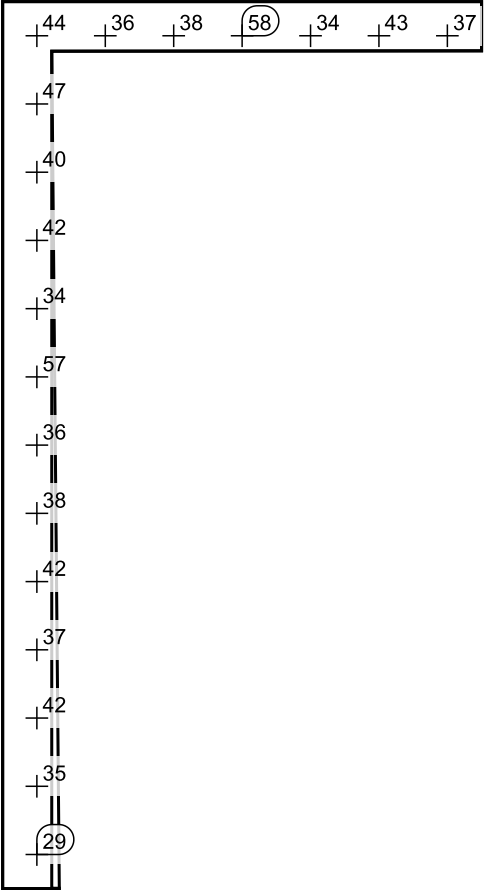
Escala: 1 : 200

Cores falsas [lx]



Escala: 1 : 200

Grelha de valores [lx]

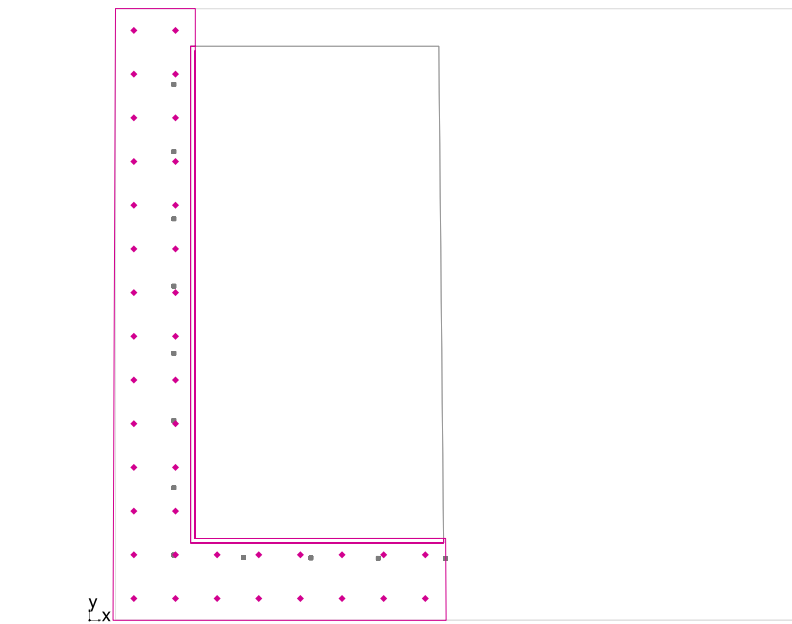


Escala: 1 : 200

Tabela de valores [lx]

m	-3.788	-1.976	-0.165	1.647	3.459	5.270	7.082
7.361	43.5	35.7	38.5	58.2	33.5	42.9	36.7
5.555	47.4	/	/	/	/	/	/
3.748	39.9	/	/	/	/	/	/
1.942	41.6	/	/	/	/	/	/
0.135	34.1	/	/	/	/	/	/
-1.672	56.7	/	/	/	/	/	/
-3.478	35.8	/	/	/	/	/	/
-5.285	37.8	/	/	/	/	/	/
-7.092	41.5	/	/	/	/	/	/
-8.898	37.3	/	/	/	/	/	/
-10.705	42.1	/	/	/	/	/	/
-12.512	35.0	/	/	/	/	/	/
-14.318	29.0	/	/	/	/	/	/

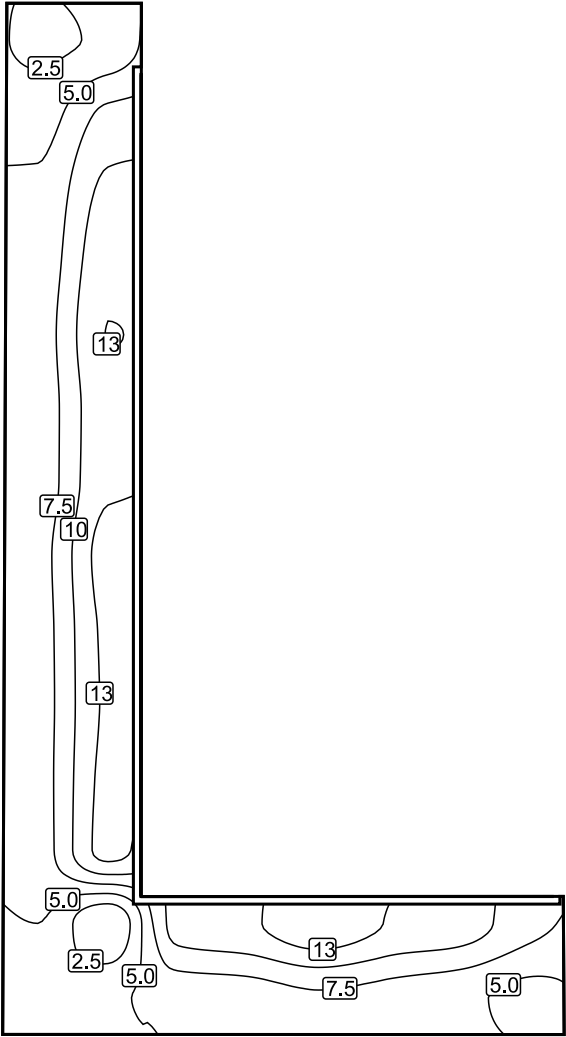
Superfície de cálculo Piso / Potência luminosa vertical



Factor de manutenção: 0.80

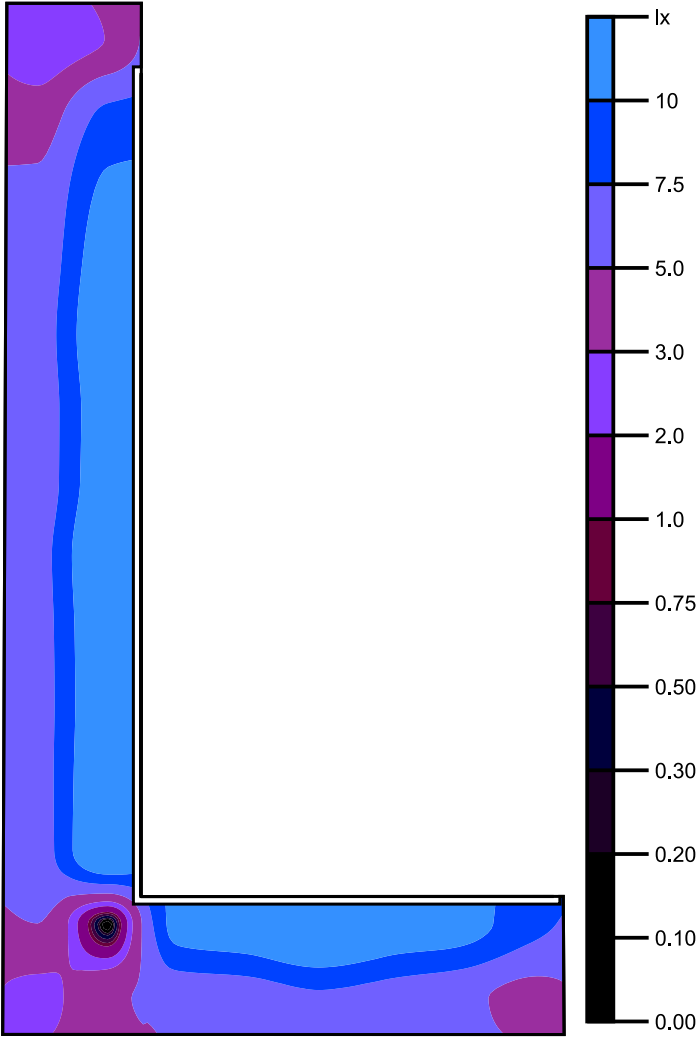
Superfície de cálculo Piso: Potência luminosa vertical (Trama)
Cenário de Luz: Cenário de Luz 1
Médio: 8.05 lx, Min: 0.00 lx, Máx: 14.4 lx, Mín/Médio: 0.00, Mín/ Máx: 0.00
Altura: 0.000 m

Linhas isográficas [lx]



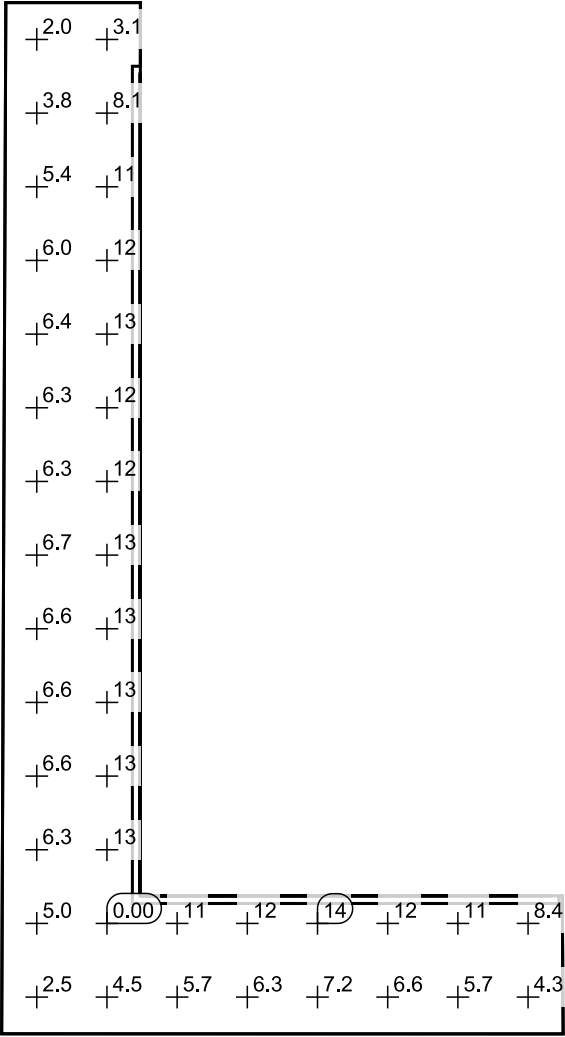
Escala: 1 : 200

Cores falsas [lx]



Escala: 1 : 200

Grelha de valores [lx]



Escala: 1 : 200

Tabela de valores [lx]

m	-5.262	-3.404	-1.546	0.312	2.170	4.028	5.886	7.744
16.006	2.03	3.08	/	/	/	/	/	/
14.056	3.82	8.12	/	/	/	/	/	/
12.106	5.40	10.5	/	/	/	/	/	/
10.156	5.99	11.8	/	/	/	/	/	/
8.206	6.40	12.5	/	/	/	/	/	/
6.256	6.26	12.0	/	/	/	/	/	/
4.306	6.25	12.2	/	/	/	/	/	/
2.356	6.75	13.4	/	/	/	/	/	/
0.406	6.65	12.9	/	/	/	/	/	/
-1.544	6.59	12.7	/	/	/	/	/	/
-3.494	6.56	13.1	/	/	/	/	/	/
-5.444	6.33	13.4	/	/	/	/	/	/
-7.394	4.99	0.00	11.0	12.1	14.4	12.4	11.3	8.43
-9.344	2.52	4.51	5.74	6.28	7.17	6.57	5.70	4.26