

200%

Panasonic Industrial Company

Air Conditioning Department

2KS252D3BA02

220/240 V, 50 Hz

2KS252D3BA02

|                         |                 |               |
|-------------------------|-----------------|---------------|
| Application             | Cooling/Heating |               |
| Ref. Charge Limit       | 38.8 oz.        | 1100 g        |
| Evaporating Temp. Range | 5°F to 53.6°F   | -15°C to 12°C |
| Specification Number    | SC-52171189-A   |               |

Rated Performance @220V

|             |                       |  |
|-------------|-----------------------|--|
| Capacity    | 14,485/14,640 Btu/hr  |  |
| Motor Input | 1,395/1,420 Watts     |  |
| Current     | 6.4/6.0 Amperes       |  |
| E.E.R.      | 10.38/10.31 Btu/hr/ W |  |

Compressor Data

|                         |                         |         |
|-------------------------|-------------------------|---------|
| Pump Type               | Rotary                  |         |
| Displacement            | 22.5 cc/rev             |         |
| Oil                     | ATMOS M60 or equivalent |         |
| Oil Charge (Precharged) | 13.9 fl. oz.            | 410 cc  |
| Net Weight              | 36.5 lb                 | 16.6 kg |

Motor Data

|                      |                           |  |
|----------------------|---------------------------|--|
| Motor Type           | Permanent Split Capacitor |  |
| Locked Rotor Amperes | 28/30 A at 220/240 V      |  |
| Winding Resistance   | Main: 1.854W, Aux: 2.594W |  |

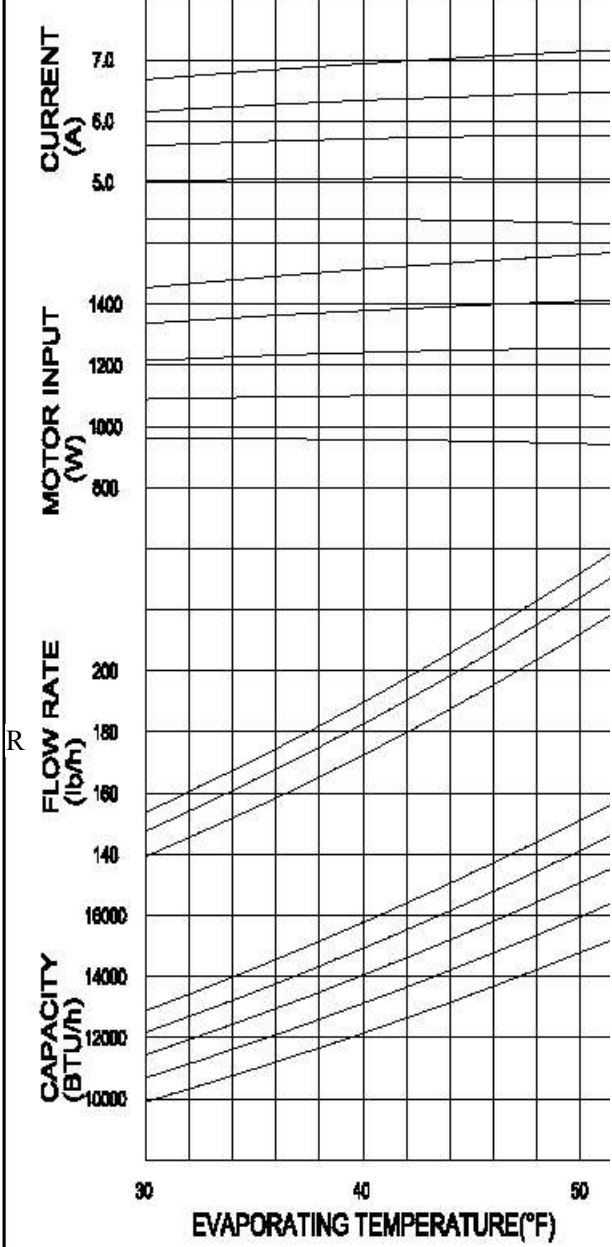
M.Conti.Current

Maximum Operating Conditions

|                     |       |       |
|---------------------|-------|-------|
| Condensing Temp.    | 149°F | 65°C  |
| Return Gas Temp.    | 95°F  | 35°C  |
| Discharge Gas Temp. | 239°F | 115°C |
| Motor Wire Temp.    | 266°F | 130°C |

Electrical Components

|                         |               |
|-------------------------|---------------|
| Overload Protector      | 7100685       |
| Texas Instrument part # | MRA99150      |
| Run Capacitor           | 40 µF/370 VAC |



Performance Data @220V

|                    |      |
|--------------------|------|
| Based on:          |      |
| Return gas Temp.   | 95°F |
| Liquid sub-cooling | 15°F |
| Ambient            | 95°F |

|                               |        | COND. TEMP.     |                 |                 |                 |
|-------------------------------|--------|-----------------|-----------------|-----------------|-----------------|
|                               |        | 100°F<br>37.8°C | 110°F<br>43.3°C | 120°F<br>48.9°C | 130°F<br>54.4°C |
| EVAP. TEMP.<br>7°F<br>-14.0°C | Btu/hr | 14260           | 13490           | 12685           | 11810           |
|                               | Watts  | 960             | 1095            | 1230            | 1360            |

|                  |       |        |
|------------------|-------|--------|
| Condensing Temp. | 130°F | 54.4°C |
| Return Gas Temp. | 95°F  | 35.0°C |
| Liquid Temp.     | 115°F | 46.1°C |
| Ambient Temp.    | 95°F  | 35.0°C |

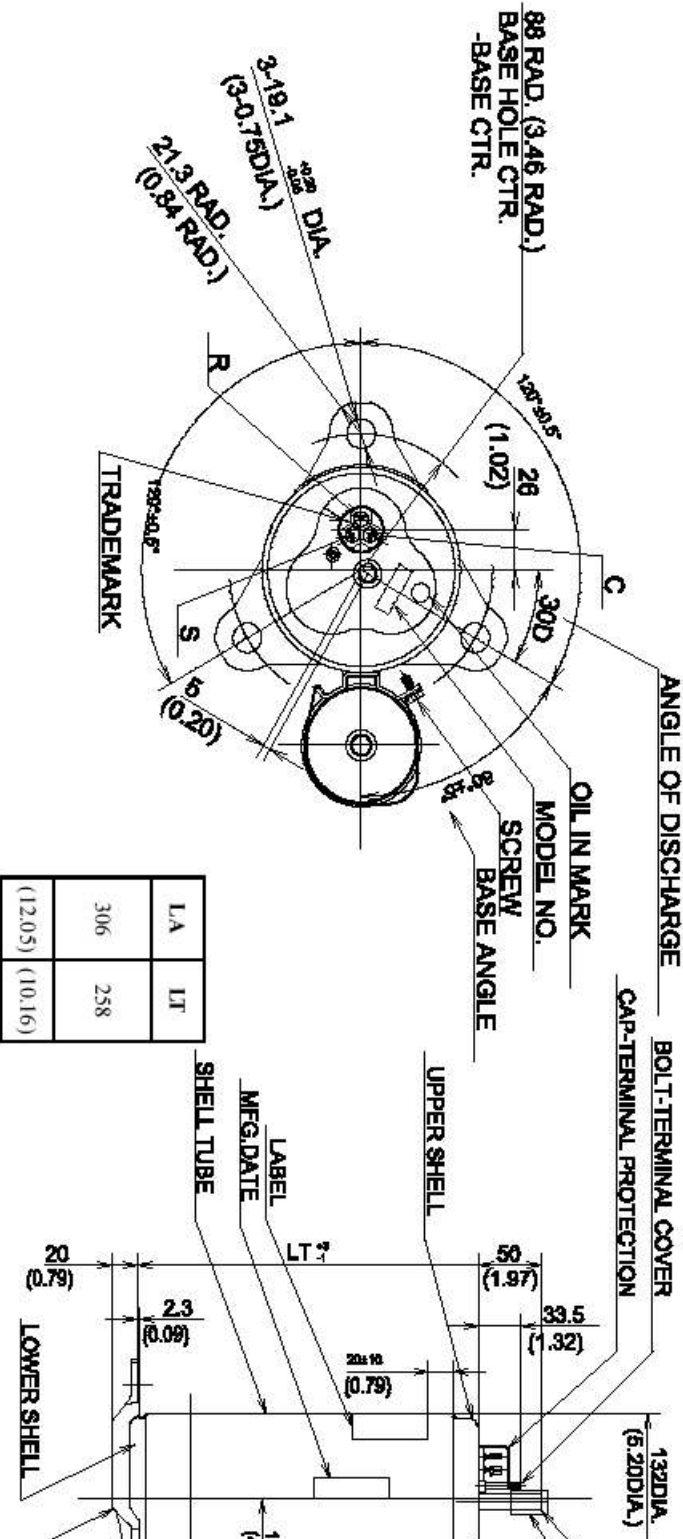
|                               |         |       |       |       |     |
|-------------------------------|---------|-------|-------|-------|-----|
|                               | Amperes | 4.4   | 5.0   | 5.7   | 6   |
| 18 <sup>F</sup> <sub>6C</sub> | Btu/hr  | 20980 | 19905 | 18765 | 175 |
|                               | Watts   | 930   | 1095  | 1260  | 14  |
|                               | Amperes | 4.3   | 5.0   | 5.8   | 6   |

<sup>2</sup>Contact Panasonic for value.

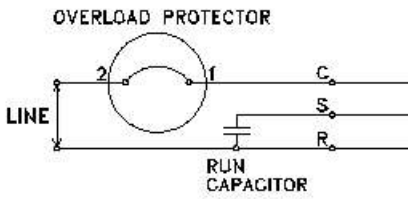
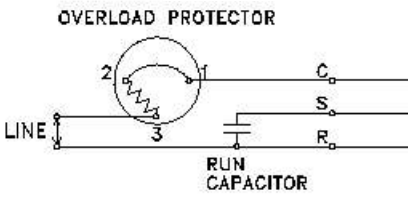
2KS224D3BA02

220/240 V, 50 Hz R-22

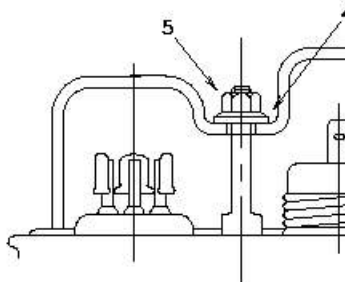
BTU 14,000



WIRING DIAGRAM



COMPRESSOR ACCESSORIES



| Accessories |                       |
|-------------|-----------------------|
| 1           | Gasket-Terminal Cover |
| 2           | Spring-OLP hold down  |
| 3           | Terminal Cover        |
| 4           | Gasket-Nut            |
| 5           | Nut-Terminal Cover    |
|             | Grommet               |