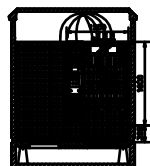
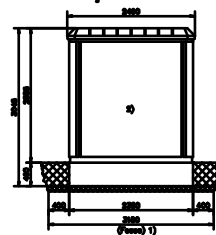


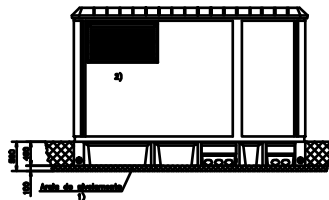
Corte B-B



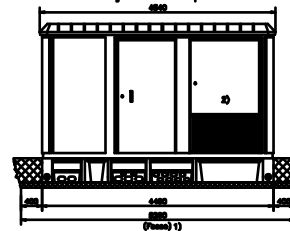
Alçado Lateral



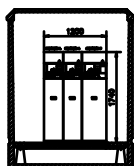
Alçado Posterior



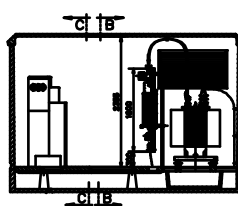
Alçado Principal



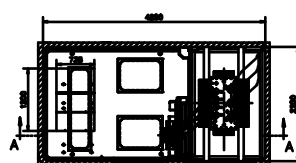
Corte C-C



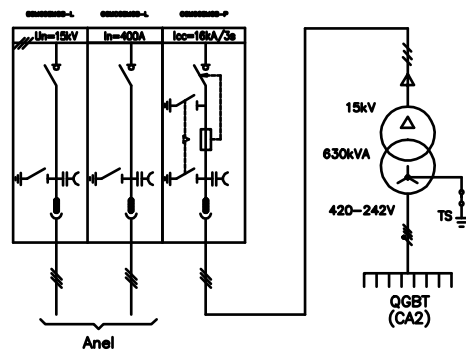
Corte A - A



Planta



Esquema Unifilar

**Notas**

- 1) - Para o acastanhamento do PFL, deverá ser feito fuso com:  
Comprimento=5,28m; Largura=3,18m; Profundidade=0,58m
- 2) - Acabamentos:  
- Paredes com tinta acrílica cor branca, RAL 9016  
- Teto, portas e grifeiras, com tinta cor castanha, RAL 8017

QGBT2(CA2)-ESQUEMA UNIFILAR

